

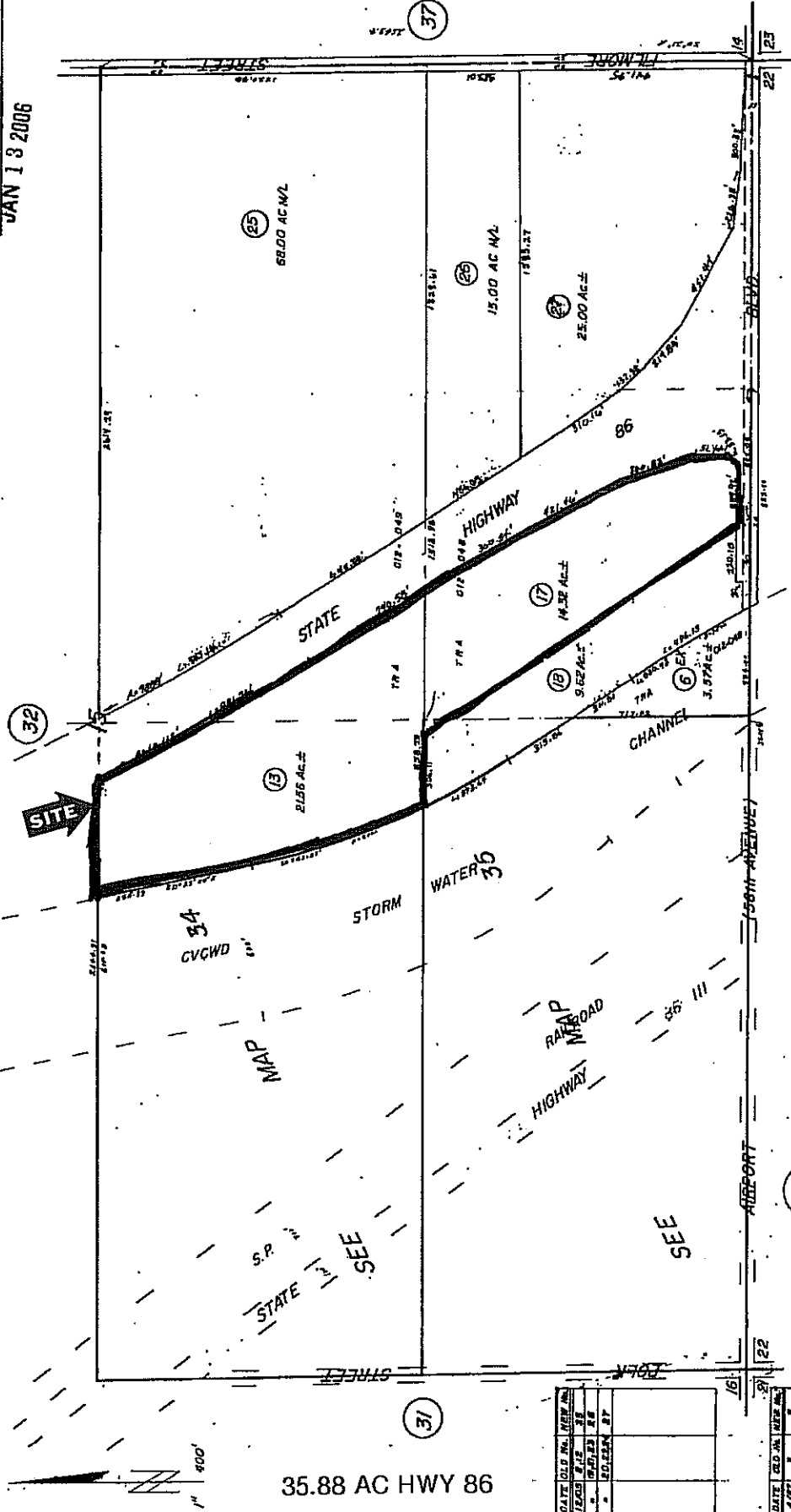
25-39-1

763-33

T.R.A. 012-048  
088-085  
012-069

POR. S1/2 SEC. 15, T. 6S, R. 8E

THIS MAP IS FOR  
ASSESSMENT PURPOSES ONLY  
JAN 13 2006



35.88 AC HWY 86

DATE	OLD NO.	NEW NO.
7/20/82	28	33
11/23/88	28	33
1/21/94	37	33

DATE	OLD NO.	NEW NO.
7/20/82	7	9
7/28/88	9	11
1/21/94	11	13
1/21/94	13	15
1/21/94	15	17
1/21/94	17	19
1/21/94	19	21
1/21/94	21	23
1/21/94	23	25
1/21/94	25	27
1/21/94	27	29
1/21/94	29	31
1/21/94	31	33

JAN 31 2006  
ASSESSOR'S MAP BK. 763 PG. 33  
RIVERSIDE COUNTY, CALIF.

60' Rds. per/inst.  
38692 4/59 R/S 11/30, M.B. 4/69, 4/78, 9/21  
LLA 2390  
R.C. 78/48

DATA: R/S 15/56, 16/56, 17/18, M.B. 4/53, 22/20-21, R/S 5/78,  
CVCWD R/H, R/N XI-RIV-187-F  
MARCH 1967

757 02

757 04

757 07